



Sliding Door Gear

Uniclass L4181	EPIC D181
CI/SfB (31.59) X	
August 2006	

Coburn Straightaway 50

Coburn Straightaway 50

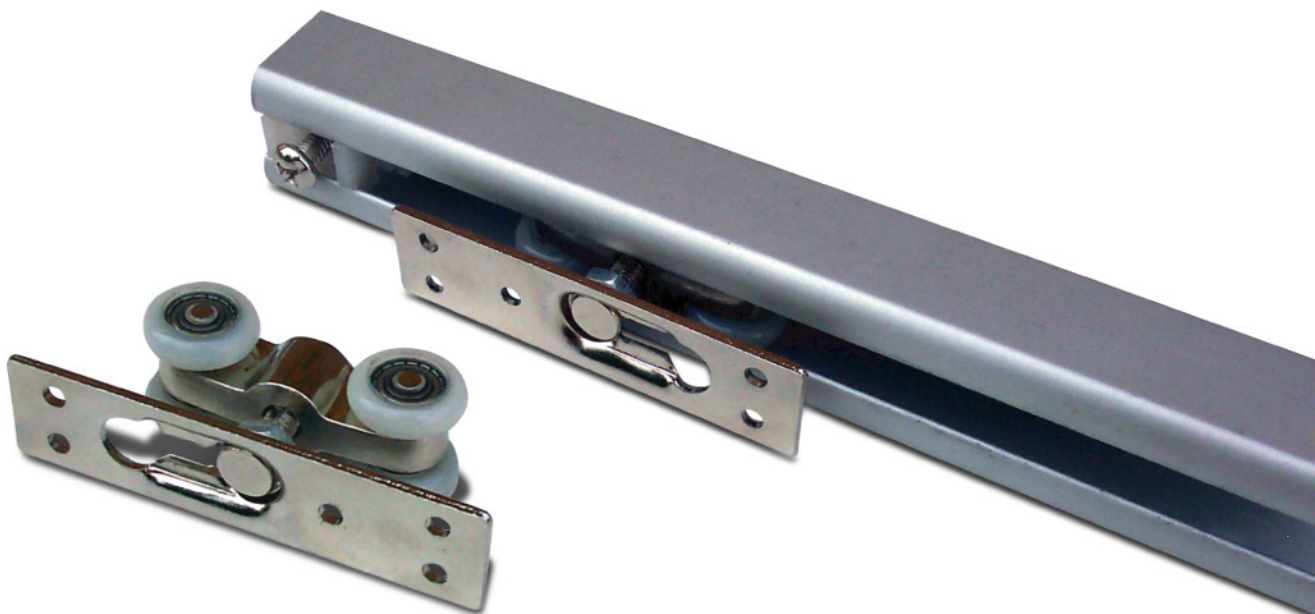
The Straightaway 50 Sliding Door Gear is designed to support timber straight sliding doors with a maximum weight of 50kgs (110lbs). Tested to BSEN 1527 (grade 5).

Finish

Aluminium track, Catalogue no. 11825, standard length 2500mm (8ft 2 inches) undrilled.

Fittings

The Straightaway 50 blister pack, Catalogue no. 01050, includes two hangers with nylon wheels and integral ball bearings, one pair of track end pieces, floor mounted guide, spanner and fitting instructions.

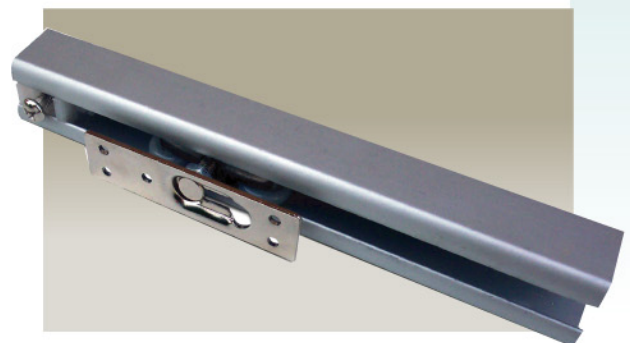




Sliding Door Gear

Coburn Straightaway 50

- Door Construction:** Timber doors. Max weight 50kgs (110lbs).
- Track:** Aluminium 2500mm (8ft 2 inches) long undrilled.
- Brackets:** Brackets can be supplied for wall mounting (these are not included in the blisterpack and need to be ordered separately).
- Hangers:** Nylon wheels. Integral ball bearings.
- Guide:** A floor mounted guide is included in the blister pack.
- Track end pieces:** 1 pair is included in the blister pack.



HILLALDAM COBURN LIMITED

HEAD OFFICE

Unit 6, Wyvern Estate,
Beverley Way, New Malden,
Surrey, KT3 4PH, England.

Telephone: 020 8336 1515
International: +44 20 8336 1515
Facsimile: 020 8336 1414
Sales Freefax: 0800 616623
e-mail: sales@hillaldam.co.uk
Web: www.coburn.co.uk

SCOTLAND

Unit 25, Ballieston Distribution
Centre, Glasgow,
G69 6UL, Scotland.

Telephone: 0141 771 6165
Facsimile: 0141 773 1693
Sales Freefax: 0800 318904



Certificate No. FS 14679
The products designed and
supplied by Hillaldam Coburn
Ltd are covered by a Quality
Assurance system in accordance
with BS EN ISO 9001:2000

The company reserves the right from time to time to make such alterations in design and manufacture as they consider necessary without notice. Drawings, specifications, illustrations, tables and other details are not binding in detail. Conditions of sale are as those published on the Company's tender forms.